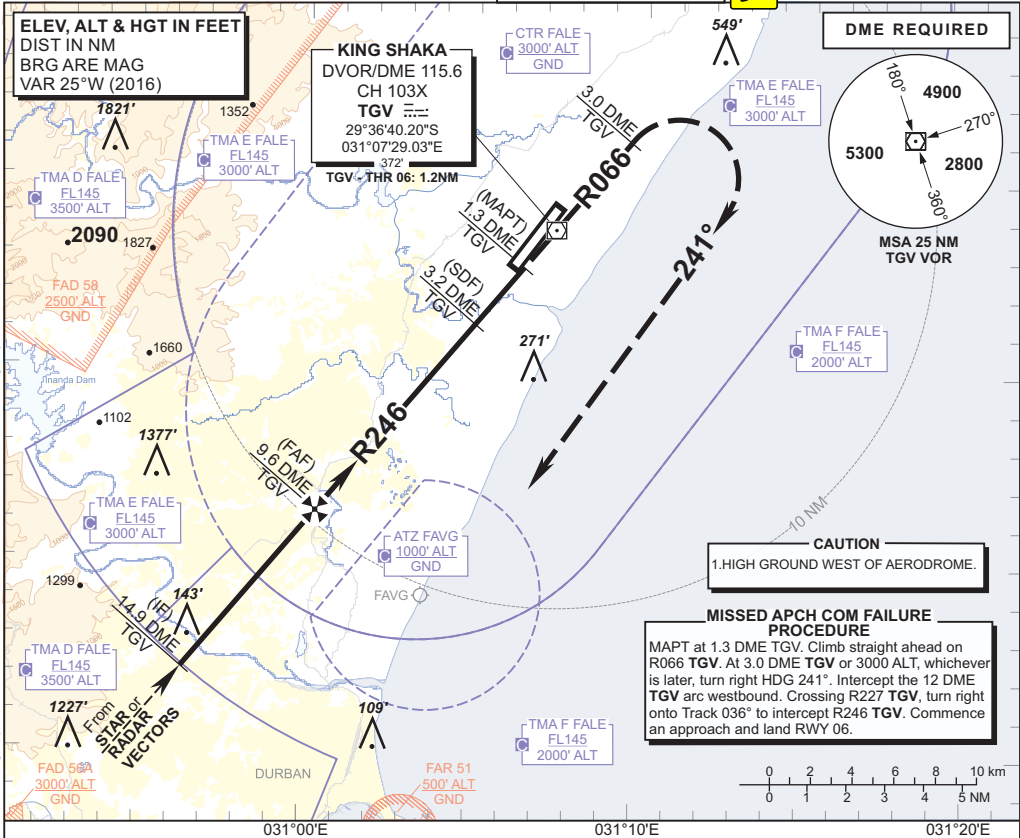


INSTRUMENT APPROACH CHART

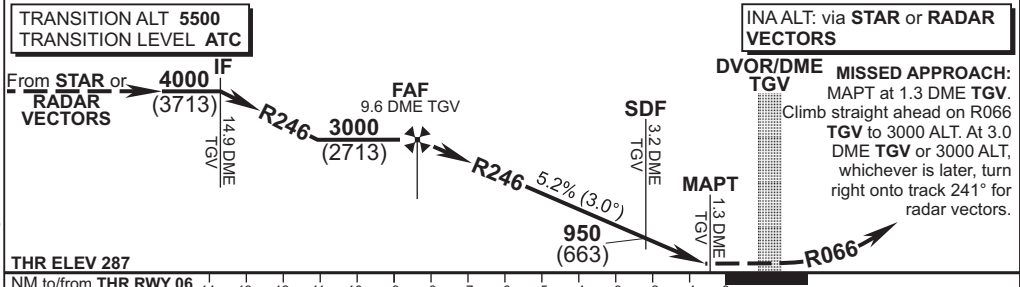
AERODROME ELEV 304'
 HEIGHTS RELATED TO
 THR RWY 06 - ELEV 287'

RADAR APP 125.75
 TWR 118.45
 GND 121.65
 ATIS 127.00

DURBAN
 (KING SHAKA INTERNATIONAL)
VOR Z RWY 06
 CAT A - D



TGV DME	8	7	6	5	4	3	2
ADVISORY ALT (HGT)	2500 (2213)	2180 (1893)	1860 (1573)	1540 (1253)	1230 (943)	910 (623)	590 (303)



OCA (H)		A	B	C	D/DL	GS	KT	80	100	120	140	160
Straight-in Approach	With 3.6% Missed APCH Gradient	650 (363)	650 (363)	650 (363)	650 (363)	FAF to THR	M:S	6:17	5:02	4:11	3:36	3:09
	With 2.5% Missed APCH Gradient	1920 (1633)	1920 (1633)	1920 (1633)	1920 (1633)	Rate of descent	FPM	424	529	635	741	847
Circling: AD ELEV		1000 (696)	1000 (696)	1270 (966)	1350 (1046)	NOTE: 1. PROCEDURE ONLY APPLICABLE VIA STAR or RADAR VECTORS.						

CHANGE: VAR/Radials/Circling